

[illegible]

Total No. of Questions : 18

B.Tech. (AE) (2012 to 2017) (Sem.-3)

MACHINE DRAWING

Subject Code : BTAE-306

M.Code : 54114

Time : 3 Hrs.

Max. Marks : 60

INSTRUCTIONS TO CANDIDATES :

1. SECTION-A is COMPULSORY consisting of TEN questions carrying TWO marks each.
2. SECTION-B contains FIVE questions carrying FIVE marks each and students have to attempt any FOUR questions.
3. SECTION-C contains THREE questions carrying TEN marks each and students have to attempt any TWO questions.

SECTION-A

Answer briefly :

1. What is the difference between a rigid and a flexible coupling?
2. What is the use of a foot step bearing?
3. What is the advantage of Plummer block over a simple bushed bearing?
4. Under what conditions do you use a knuckle joint?
5. Sketch the basic symbols for Single and Double-V butt welds.
6. What are permanent fastenings?
7. What is the difference between allowance and tolerance?
8. Differentiate between the pitch and lead of a screw thread?
9. What is a muff coupling?
10. Explain the aligned system of dimensioning.

SECTION-B

11. Draw free hand the sectional front view of a union pipe joint.
12. Draw free hand upper half sectional front view of a protected type flange coupling on proportionate scale.
13. Name the different forms of V- threads and draw the detailed sketch of any one of them.
14. Draw free hand the sectional front view of a single plate friction clutch.

17. Figure below shows the details of a plummer block. Assemble the parts and draw the full sectional front view.

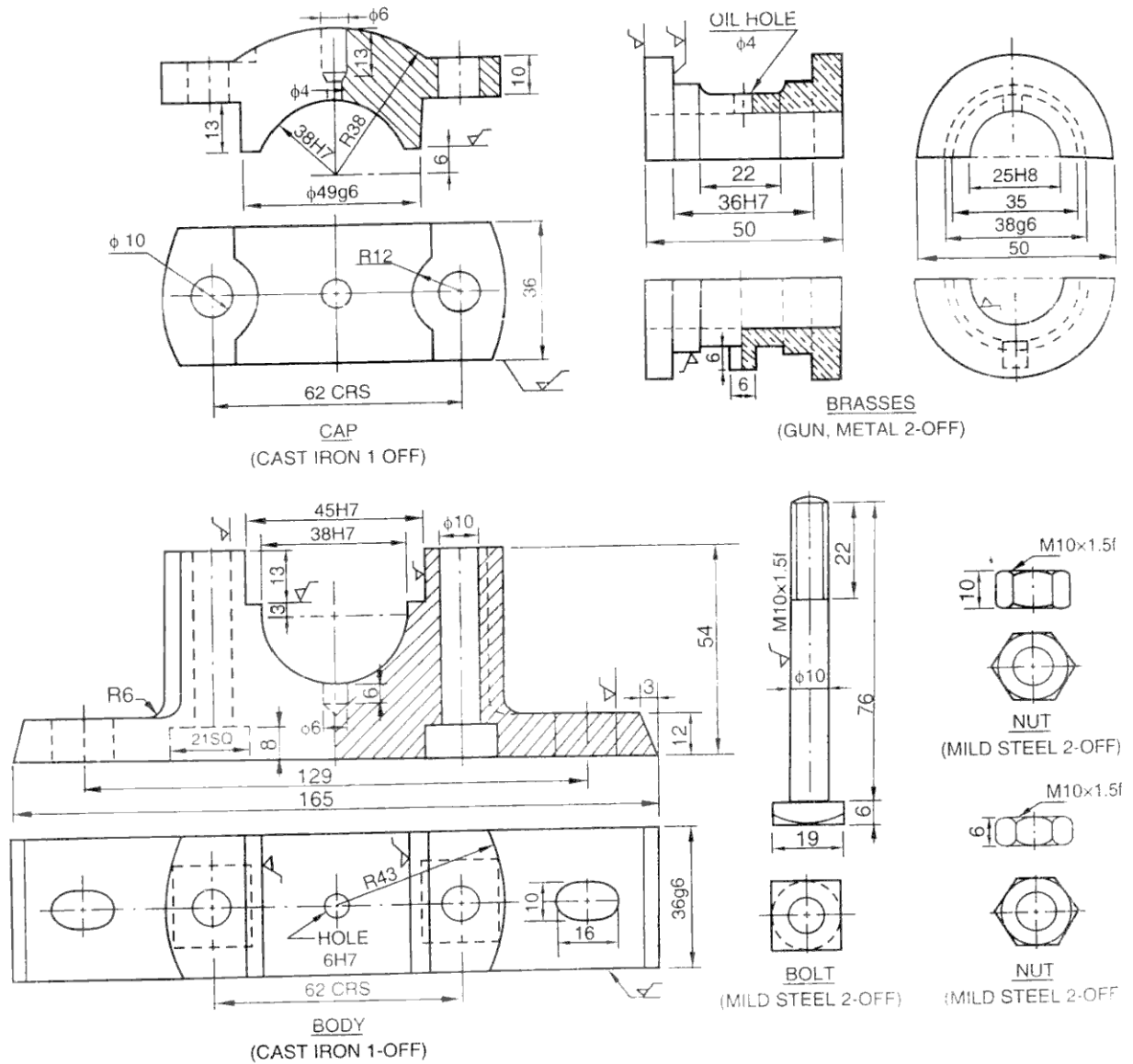


Fig. 2

18. Figure below shows die details of a gib and cotter joint. Assemble the parts and draw the half sectional front view and the top view.

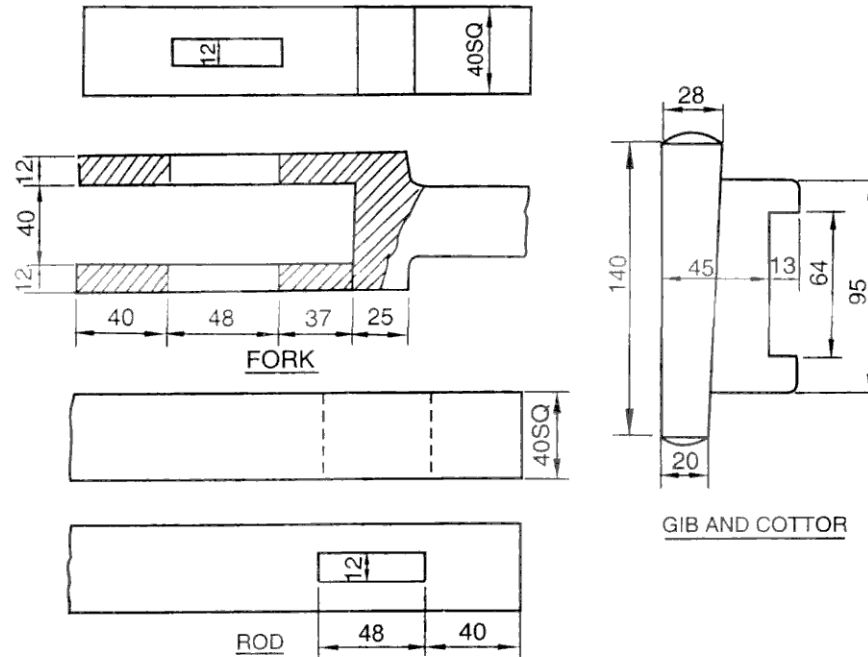


Fig. 3

NOTE : Disclosure of Identity by writing Mobile No. or Marking of passing request on any paper of Answer Sheet will lead to UMC against the Student.