

Roll No.

Total No. of Pages : 03

Total No. of Questions : 06

B.Tech. (AE) (2018 Batch) (Sem.-3)

MACHINE DRAWING

Subject Code : BTAE-304-18

M.Code : 76402

Time : 3 Hrs.

Max. Marks : 60

INSTRUCTIONS TO CANDIDATES :

1. **SECTION-A** is **COMPULSORY** consisting of **TEN** questions carrying **TWO** marks each.
2. **SECTION-B** contains **THREE** questions carrying **FIVE** marks each and students have to attempt any **TWO** questions.
3. **SECTION-C** contains **TWO** questions carrying **THIRTY** marks each and students have to attempt any **ONE** questions.
4. Assume any missing data suitably.

SECTION-A

1. Write briefly :

- Draw the symbol of third angle projection system.
- What is fullering in the context of rivets?
- What is the difference between allowance and clearance?
- Draw free hand any two head forms of rivets.
- What is the function of connecting rod in IC engine?
- What is the necessity of conventional representation of screw threads?
- What is a flexible coupling? What are its advantages?
- Differentiate between pitch and lead of a screw thread.
- Explain the unidirectional system of dimensioning.
- Sketch the basic symbols of Single and Double-U butt welds.

SECTION-B

2. Draw free hand the two views of a hexagonal nut of size M30. Mark the various proportions in terms of its diameter “d”?
3. Draw free hand the sectional front view and top view of a knuckle joint on proportionate scale.
4. Draw free hand the plan and sectional elevation of a double riveted butt joint (zig-zag type) on proportionate scale.

SECTION-C

5. Figure 1 shows the details of a crane hook. Assemble the parts and draw (a) front view full in section (b) right side view. Also prepare bill of materials.

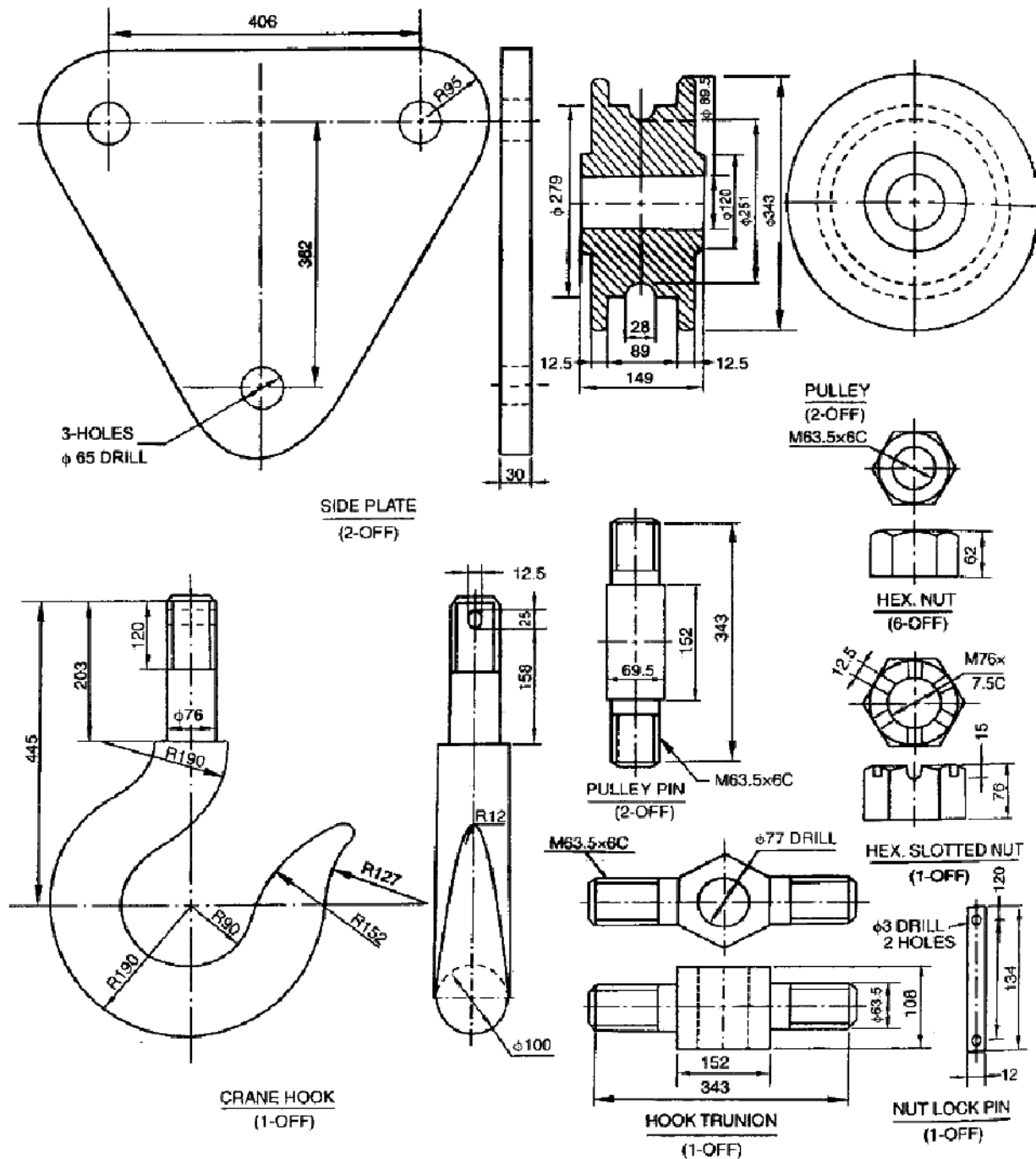


Fig. 1

6. Figure 2 shows the details of a tool post. Assemble the parts and draw (a) front view full in section (b) top view. Also prepare bill of materials.

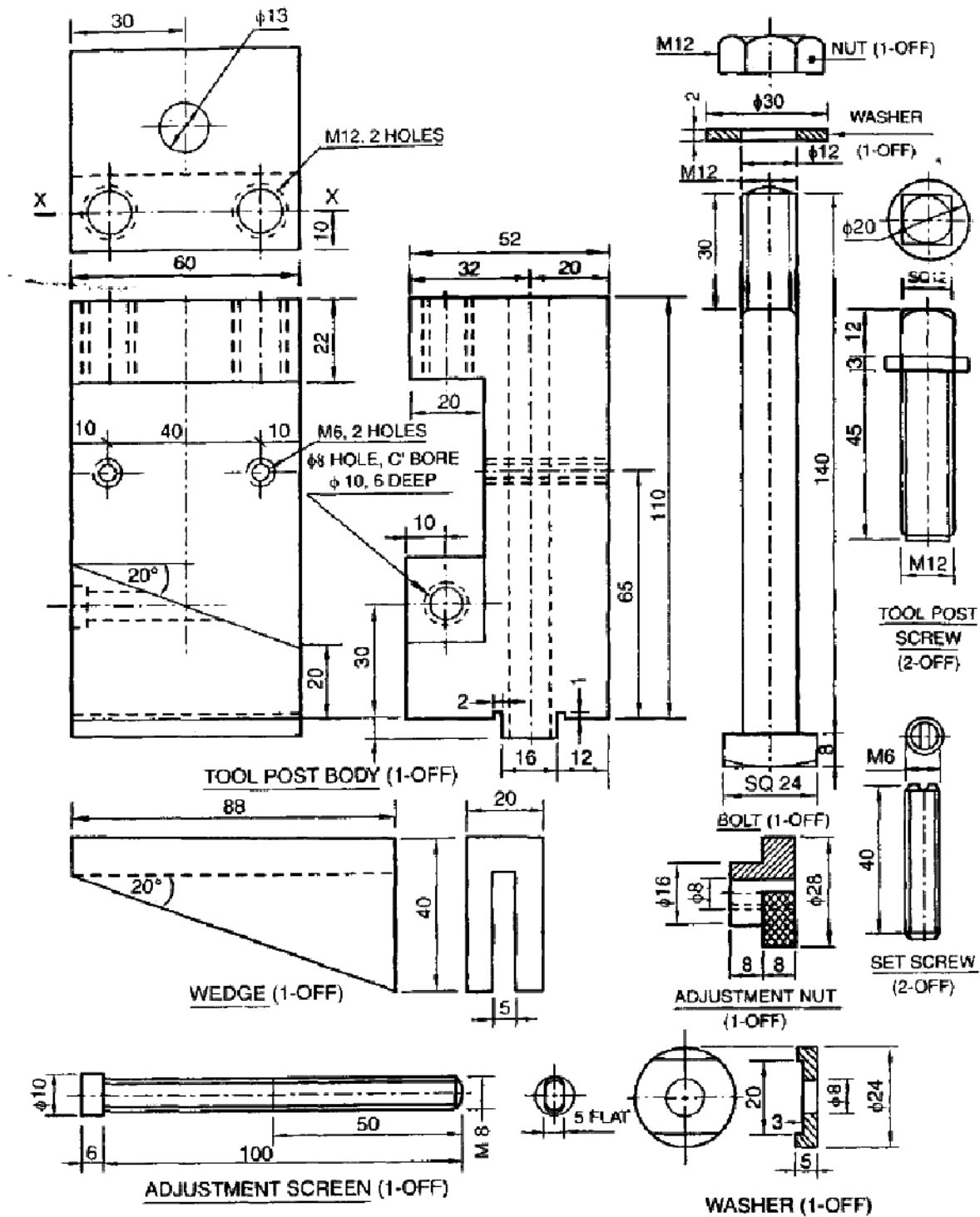


Fig. 2

NOTE : Disclosure of Identity by writing Mobile No. or Making of passing request on any page of Answer Sheet will lead to UMC against the Student.