

SECTION-B (FREEHAND SKETCHING)

- Q2. Draw freehand sketch of top half sectioned front view of pin type flexible coupling. 5
- Q3. Draw freehand sketches of front view and top view of a cotter joint. 5
- Q4. Draw a freehand sketch of flanged pipe joint. 5

SECTION-C

- Q5. Assemble the parts of **Connecting rod** given in Fig.1 and draw the following views (with bill of materials) :

a) Elevation

b) Top view (full section)

30

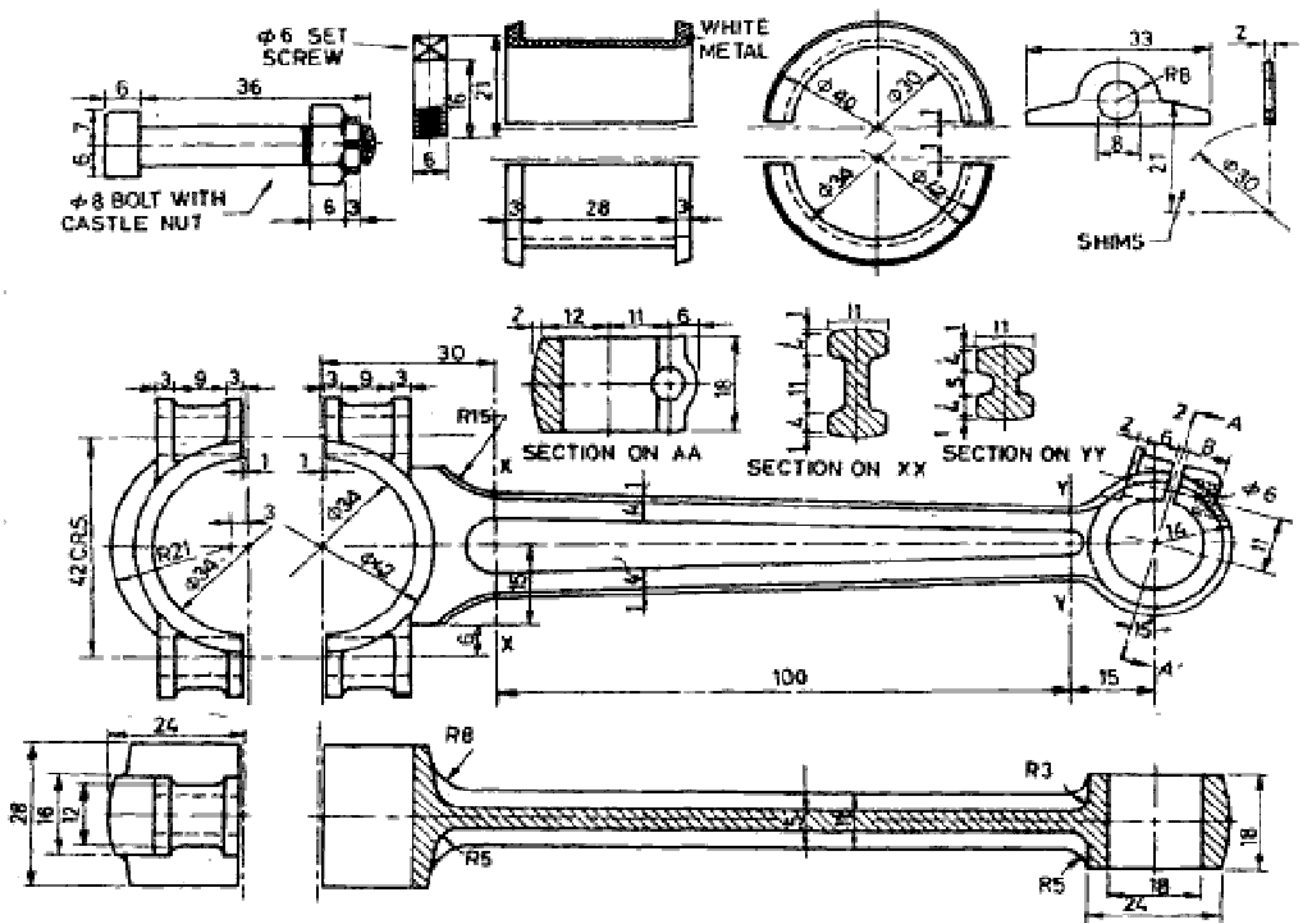


Fig. 1

Q6. Assemble the parts of a **Plummer block** given in Fig.2 and draw the following views (with bill of materials):

a) Elevation left half in section

b) Plan

30

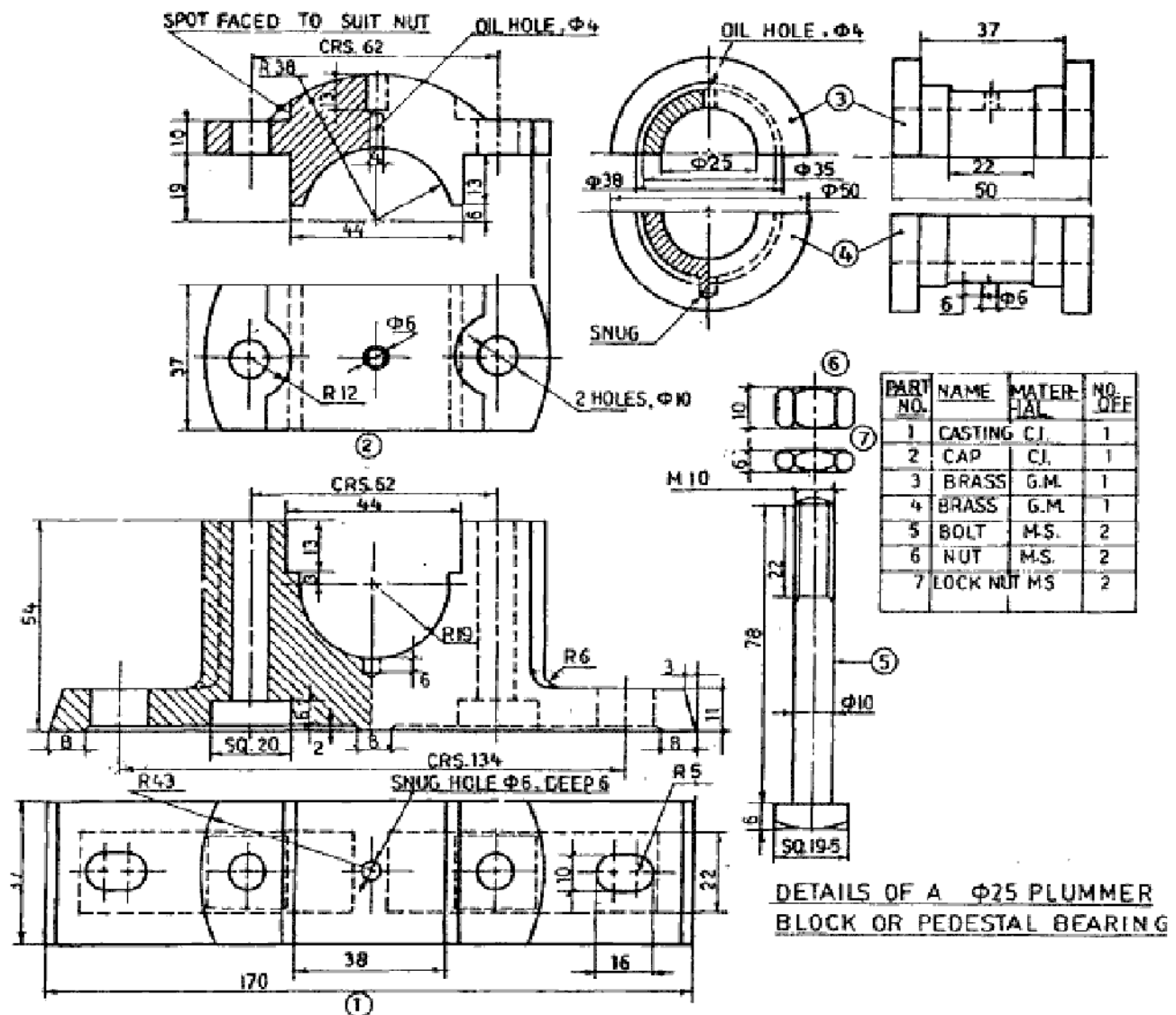


Fig. 2

NOTE : Disclosure of Identity by writing Mobile No. or Making of passing request on any page of Answer Sheet will lead to UMC against the Student.